



# GAT MONTHLY MEMBERSHIP PROGRESS REPORT

Results as of: 11/30/2022

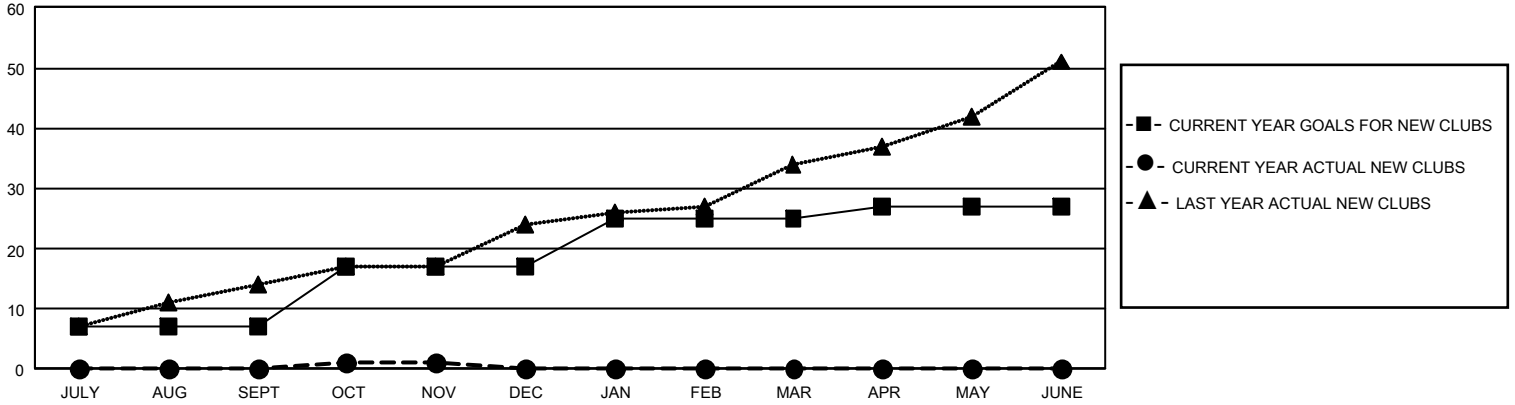
## GMT Constitutional Area 8, Group A

REPORT DOES NOT INCLUDE CLUBS IN UNDISTRICTED AREAS.

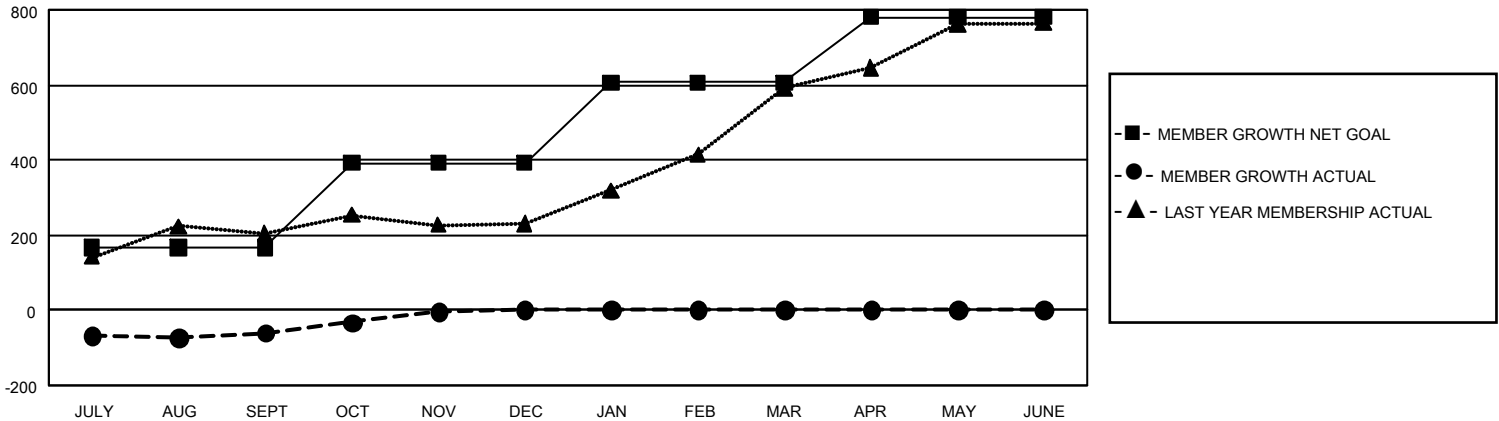
Clubs			
RESULTS FOR 2022-2023			
QUARTER	NEW CLUB GOAL	NEW CLUBS	DROPPED CLUBS
JULY/AUG/SEPT	21	0	2
OCT/NOV/DEC	30	1	0
JAN/FEB/MAR	24	0	0
APR/MAY/JUNE	6	0	0

Members			
RESULTS FOR 2022-2023			
QUARTER	MEMBER GROWTH NET GOAL	MEMBER GROWTH ACTUAL	DROPPED MEMBERS ACTUAL (including transfers)
JULY/AUG/SEPT	167	191	228
OCT/NOV/DEC	225	146	85
JAN/FEB/MAR	215	0	0
APR/MAY/JUNE	174	0	0

GOALS AND ACTUAL NEW CLUBS CUMULATIVE



GOALS AND ACTUAL MEMBERS CUMULATIVE



DROPPED CLUBS: 2	112 CLUBS OF 392 ADDED 1 OR MORE NEW MEMBERS	<u>GENDER DISTRIBUTION</u>	
<u>DROPPED MEMBERS</u>		MALE	6,449 (70.02%)
DECEASED	11	FEMALE	2,759 (29.96%)
CLUB CANCELLED	35	NON BINARY	0 (0.00%)
OTHER	267	PREFER NOT TO ANSWER	2 (0.02%)
<b>TOTAL</b>	<b>313</b>	TOTAL FAMILY UNIT MEMBERS	192
	<a href="#">CLICK HERE FOR CUMULATIVE MEMBERSHIP DATA</a>	FAMILY MEMBERS PAYING HALF DUES	100